

Start Installation tool

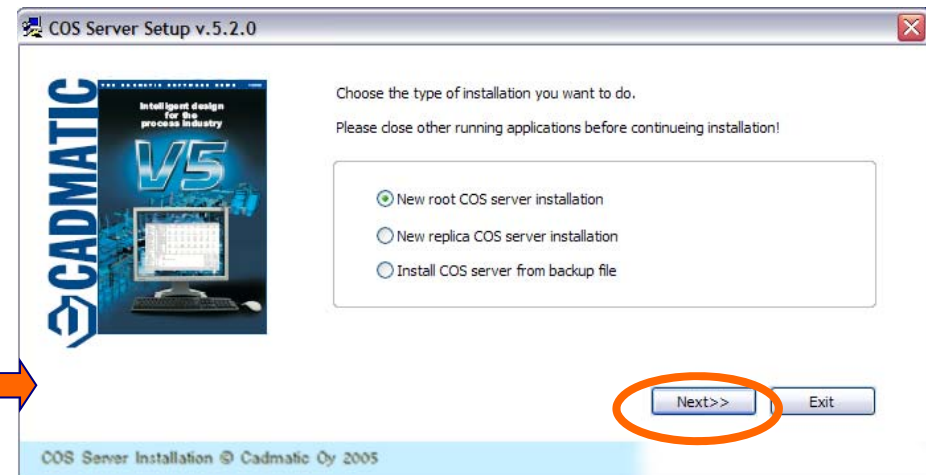


Install COS server

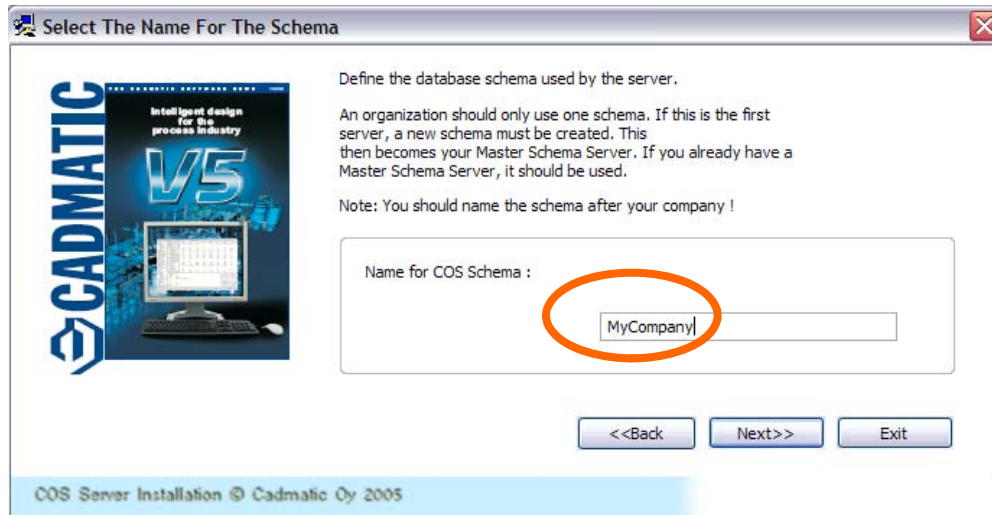
COS server is independent server and can be installed before or after or without other applications.

COS data folder must be on the LOCAL DISK of the server where COS server is running.

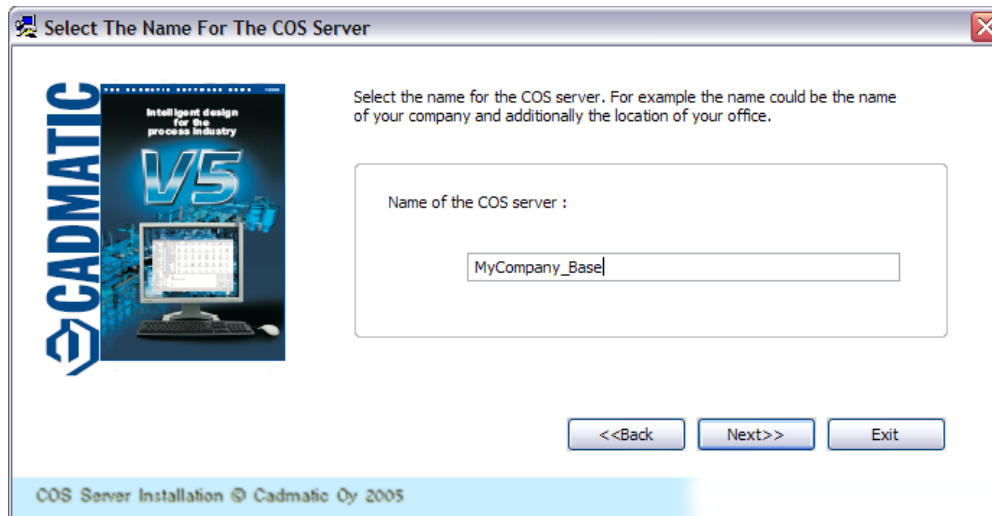
Install new server or restore from backup



Name of schema & name of server

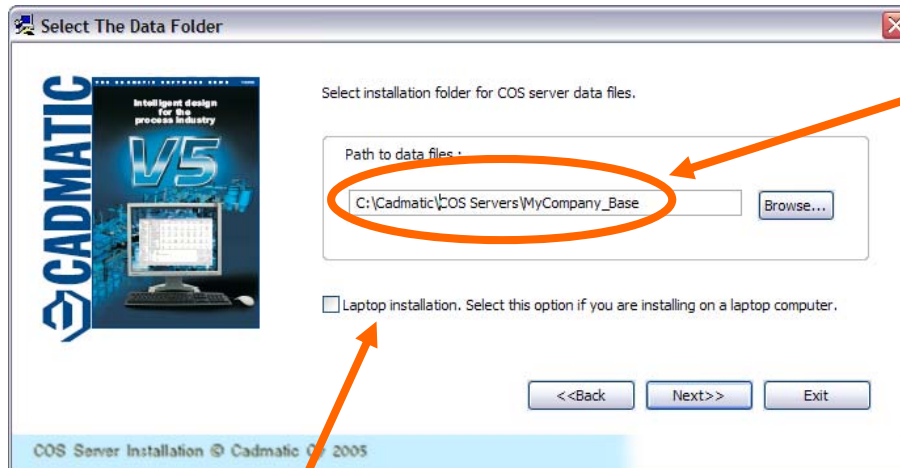


If company has only one schema, then name of schema can be name of company. If schema is for one project or customer, then this can be used to define this name.



Each server which is running under certain schema needs unique name. Name of site or ordinal number can be used as separator. Avoid too long COS server names.

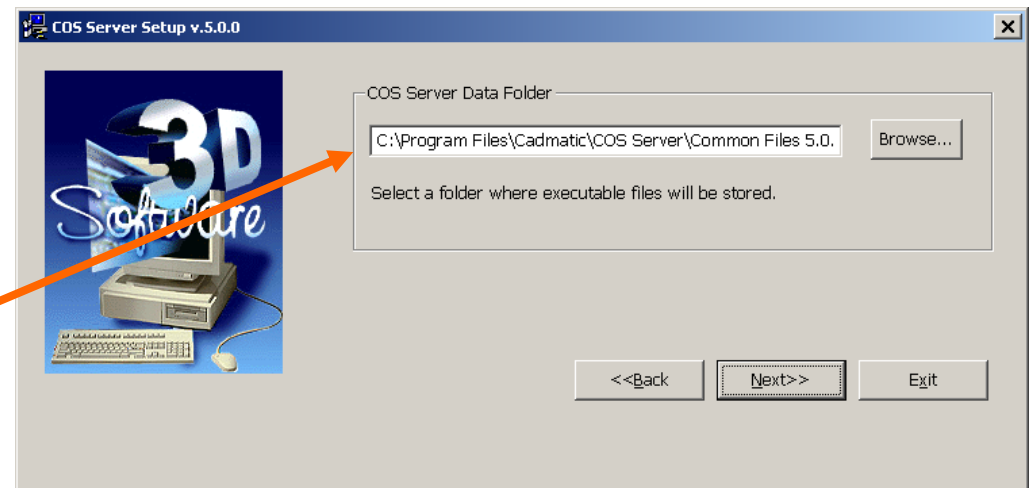
Select folder for server files and accept executable folder



Select some DEDICATED LOCAL folder to store server files of this new server ONLY. Several Gigabytes free space is required.

If laptop installation remember to activate this option. Documents will be accessed from this computer only.

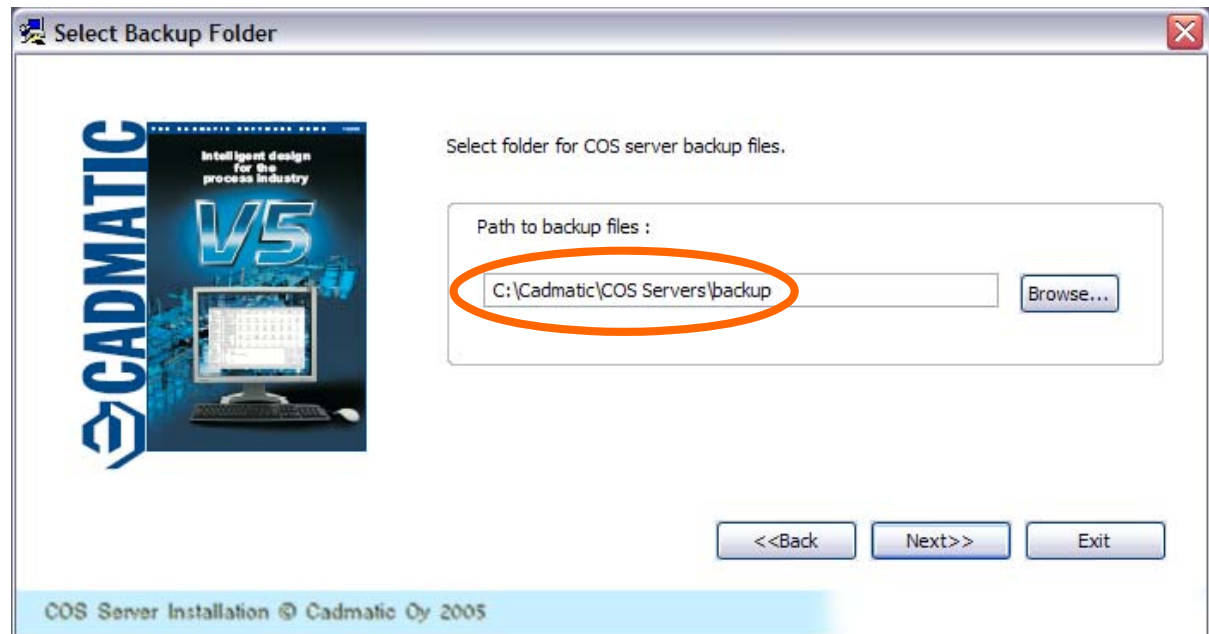
Default folder for executables is usually suitable as default.



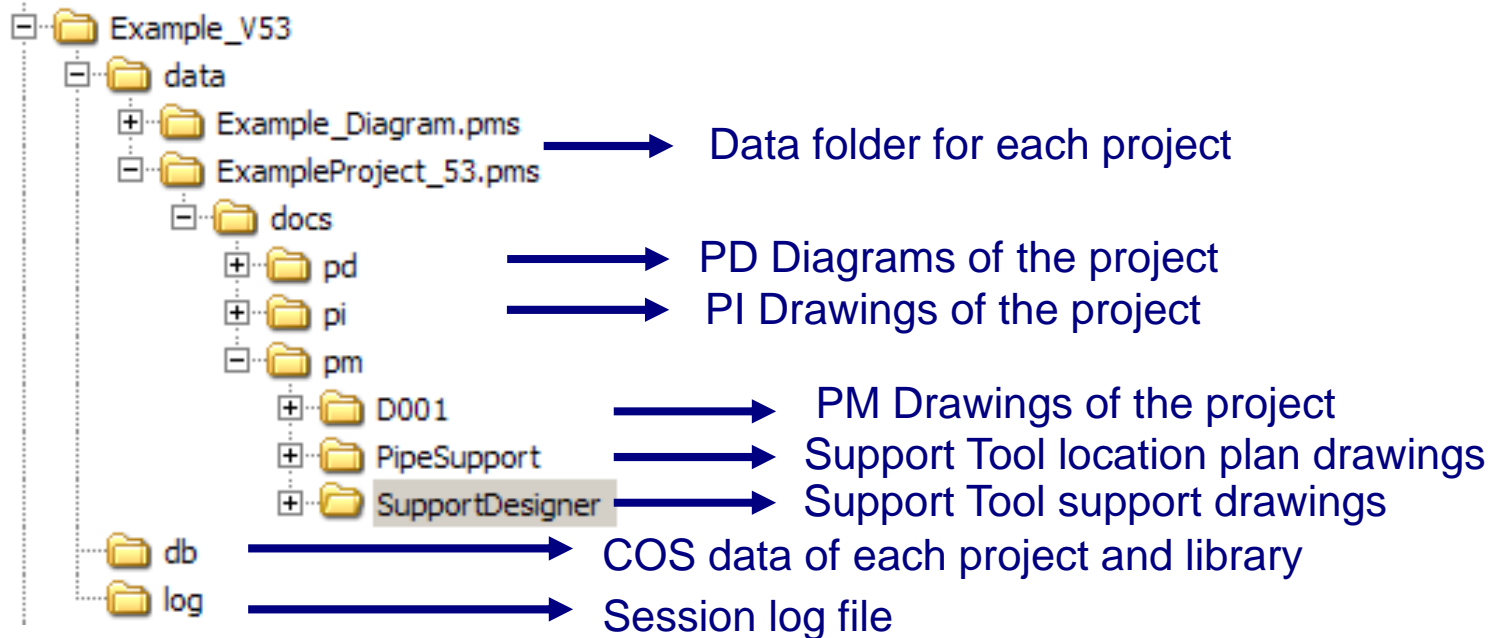
Select folder for server files and accept executable folder

Select default folder for backup files. Backup files of all COS Servers will be stored in this folder as default if any other folder is defined later in COS backup settings.

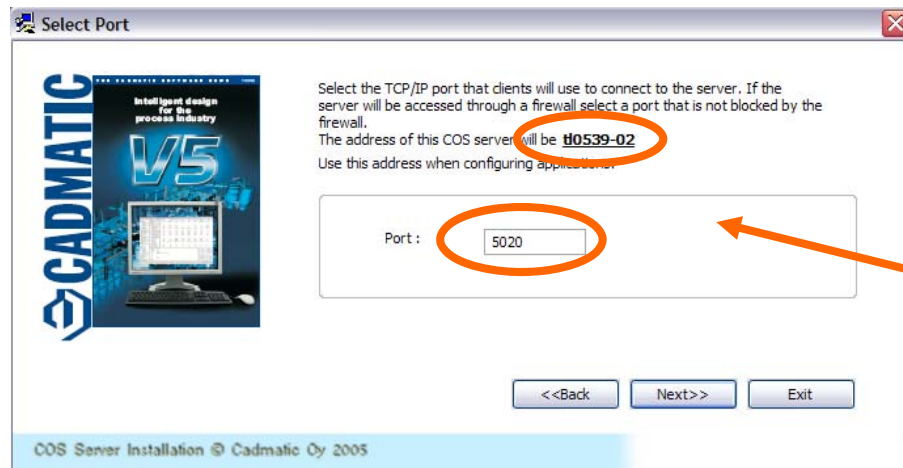
It is recommended to store backup files on



What is there in the COS data directory ?



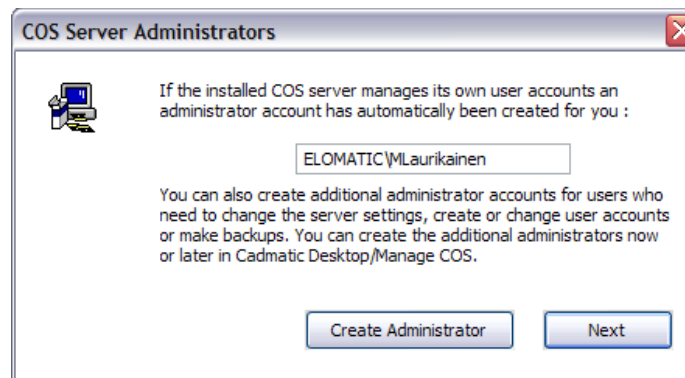
Select TCP/IP port



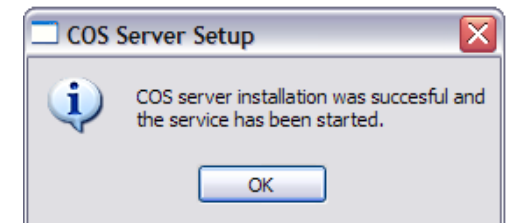
Select FREE port. As default 5020 is used. Each server requires dedicated port.


Write down this address for future use (Next page).

You can define additional administrator account here or later.



Service is started



Name	Description	Status	Startup Type	Log On As
 COS_MyFirm_Base	Cadmatic COS server version 5.0.0	Started	Automatic	LocalSystem

COS default account

Add COS server to managed servers

